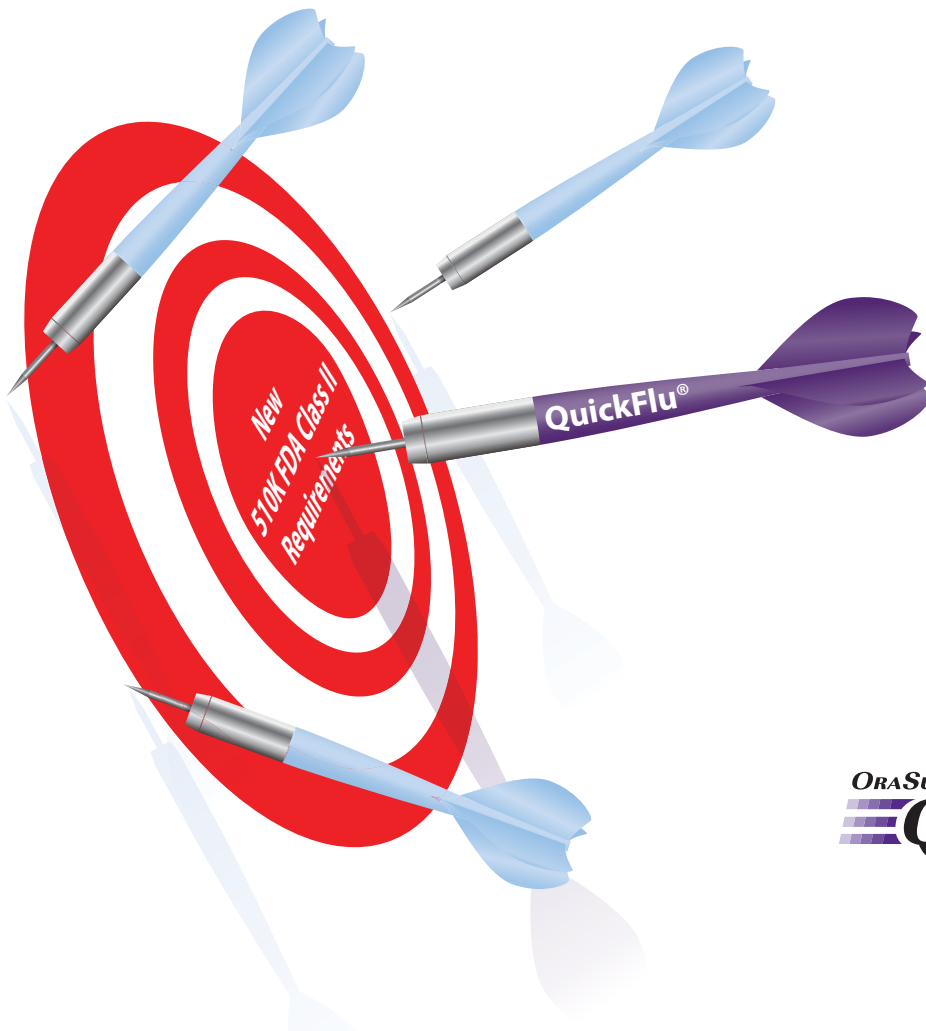


Is your flu test hitting the target?

- ✓ Meets the FDA's New Rapid Antigen Detection Tests (RIDTs) reclassification requirements?
- ✓ Has demonstrated analytical sensitivity for CDC's 2017-2018 flu strain panels?
- ✓ Is CLIA-waived?



ORASURE
QuickFlu®
RAPID FLU A+B TEST



Safeguard your patients' health with performance that delivers

Compare Your Sensitivity and Specificity...

OraSure QuickFlu® delivers highly accurate results for flu types A and B and meets FDA's new standards of performance¹

	Sample Type	Sensitivity	Specificity
INFLUENZA A	Nasal Swab (n=358)	97.0%	94.2%
	NP Swab (n=251)	97.1%	95.0%
	NP Aspirate (n=253)	98.4%	95.8%
INFLUENZA B	Nasal Swab (n=358)	94.3%	93.5%
	NP Swab (n=251)	93.2%	96.6%
	NP Aspirate (n=253)	94.4%	100.0%

Samples that produced discrepant results between OraSure QuickFlu® and viral culture were further analyzed with realtime RT-PCR and RT-PCR results were considered as true results.

Compare Your Clinical Performance Characteristics...

OraSure QuickFlu® detects a wide spectrum of flu strains, including the latest worldwide strains^{2,3}

- OraSure QuickFlu® analytical performance characteristics established across 49 different influenza strains including the most recent CDC's 2017-2018 flu strain panels
 - A/Brisbane/59/2007 (H1N1)
 - A/Fujian Gulou/1896/2009 (H1N1)
 - A/Perth/16/2009 (H3N2)
 - A/Hong Kong/4801/2014 (H3N2)
 - A/California/07/2009 ((H1N1) pdm09)
 - A/Michigan/45/2015 ((H1N1) pdm09)
 - B/Brisbane/60/2008 (Victoria Lineage)
 - B/Texas/02/2013 (Victoria Lineage)
 - B/Wisconsin/1/2010 (Yamagata Lineage)
 - B/Phuket/3073/2013 (Yamagata Lineage)

Compare Your Device to FDA's New Rule...

OraSure QuickFlu[®] exceeds the FDA's reclassification requirement minimums for RIDTs¹

- As of February 13, 2017, all RIDTs must meet the minimum acceptance performance criteria and comparator method for antigen based RIDTs. Tests that do not meet the new requirements cannot be used.
- Analytical reactivity testing must be performed on contemporary influenza strains and newly emerging strains in the event of an emergency

	Viral Culture Comparator				Molecular Comparator			
	Sensitivity	Lower Bound of 95% Confidence Interval	Specificity	Lower Bound of 95% Confidence Interval	Positive Percent Agreement	Lower Bound of 95% Confidence Interval	Negative Percent Agreement	Lower Bound of 95% Confidence Interval
INFLUENZA A	90.0%	≥80.0%	95.0%	≥90.0%	80.0%	≥70.0%	95.0%	≥90.0%
INFLUENZA B	80.0%	≥70.0%	95.0%	≥90.0%	80.0%	≥70.0%	95.0%	≥90.0%

Compare Your Total Rapid Flu Testing Costs...

OraSure QuickFlu[®] delivers an all-in-one package with little soft cost impact

Included CDC recommended flocked swab^{4,5}

No added collection devices needed

OraSure QuickFlu[®] allows flexible timing

Transport media is unnecessary with most workflows

Easy-to-use rapid flu test with built-in control line

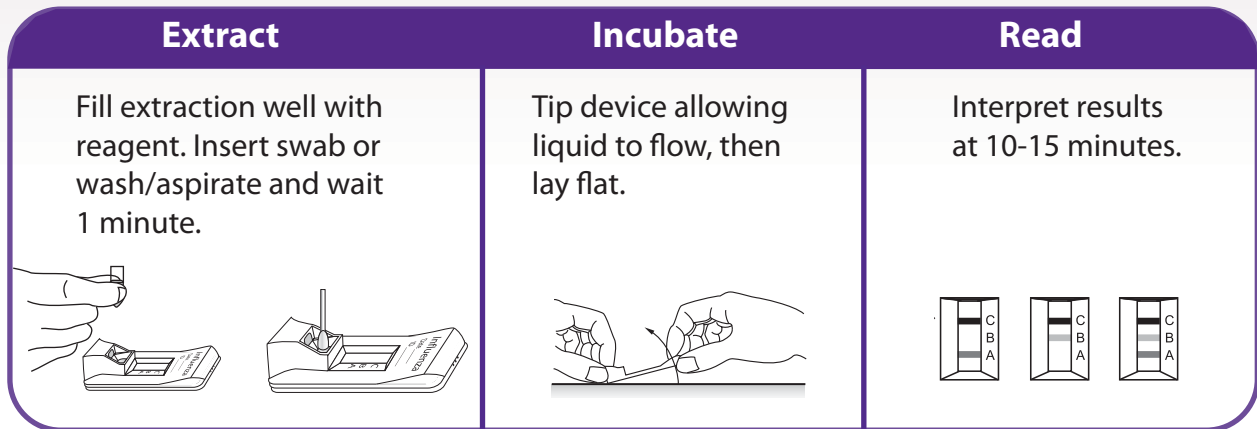
Cuts down on user error

Highly efficient flocked swab reduces repeat testing^{4,5}

Superior collection and release results in superior performance

Compare Your Rapid Flu Test Procedure...

OraSure QuickFlu[®] is a simple, easy-to-use rapid flu test



Compare Your Rapid Testing Workflow...

OraSure QuickFlu[®] provides maximum flexibility with minimal impact on workflow, and no need to use transport media

While testing fresh specimens is best, OraSure QuickFlu[®] allows flexible timing after collection before testing⁶

- Swab samples may be stored up to 4 hrs. at room temperature or up to 8 hrs. at 2-8°C before testing
- Aspirate samples may be stored up to 8 hrs. at room temperature or up to 24 hrs. at 2-8°C; can be frozen for up to 7 days
- Ready-to-use reagents with room temperature storage

Compare Your Specimen Collection...

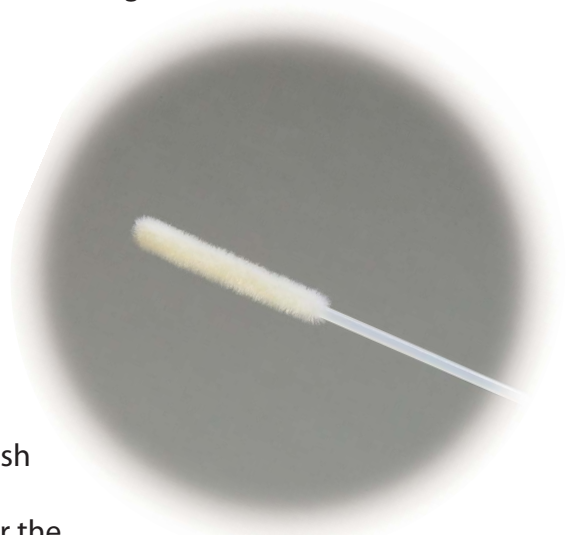
OraSure QuickFlu® Enhances Specimen Collection in Common Flu Specimens

Includes flocked swab

- Optimizes sample collection and release resulting in superior performance
- CDC recommends flocked swabs for influenza specimen collection⁴
- The American Society of Microbiology says “NP flocked swabs collect better samples than routine NP swabs”⁵

OraSure QuickFlu® uses common specimens to test for flu virus

- Nasal swab, NP swab or NP aspirate/wash
- Nasal swab collection is comfortable for the patient, simple for healthcare provider and does not require ancillary supplies



1 Department of Health and Human Services. 21 CFR Part 866 [Docket No. FDA-2014-N-0440] Microbiology Devices; Reclassification of Influenza Virus Antigen Detection Test Systems Intended for Use Directly with Clinical Specimens. Federal Register, Vol. 82, No. 8, January 12, 2017, 3609-19.
2 CDC Flu Season Updates. <https://www.cdc.gov/flu/about/season/current.htm> 3 OraSure Quickflu® Rapid Flu A+B Test package insert. Additional data on file.
4 <http://www.rapidmicrobiology.com/news/2023h9.php> 5 Journal of Clinical Microbiology, 2006 Jun; 44(6): 2265-2267 6 If testing outside these times, refer to PI for acceptable transport media

Try OraSure QuickFlu®

- ✓ High accuracy that meets the FDA RIDT reclassification requirements
- ✓ Proven analytical sensitivity detection of recent flu strains
- ✓ Included flocked swab results in superior performance
- ✓ Simple 3-step CLIA-waived procedure



Description

Each box of flu tests contains:

Flocked Swabs

Pre-measured Extraction Reagent

1 Positive Control Swab & 1 Negative Control Swab

Box of 22 Flu Tests: 1001-0320

Aspirate/Wash Sample Kit*: 1001-0321

*Additional supplies necessary for testing liquid/non-swab samples

CPT Code: 87804QW

Order Information

To **Find out** more or to place an order, call MedVet Solutions at **708-949-0032** or visit **www.medvetsolutions.com**



OraSure Technologies

